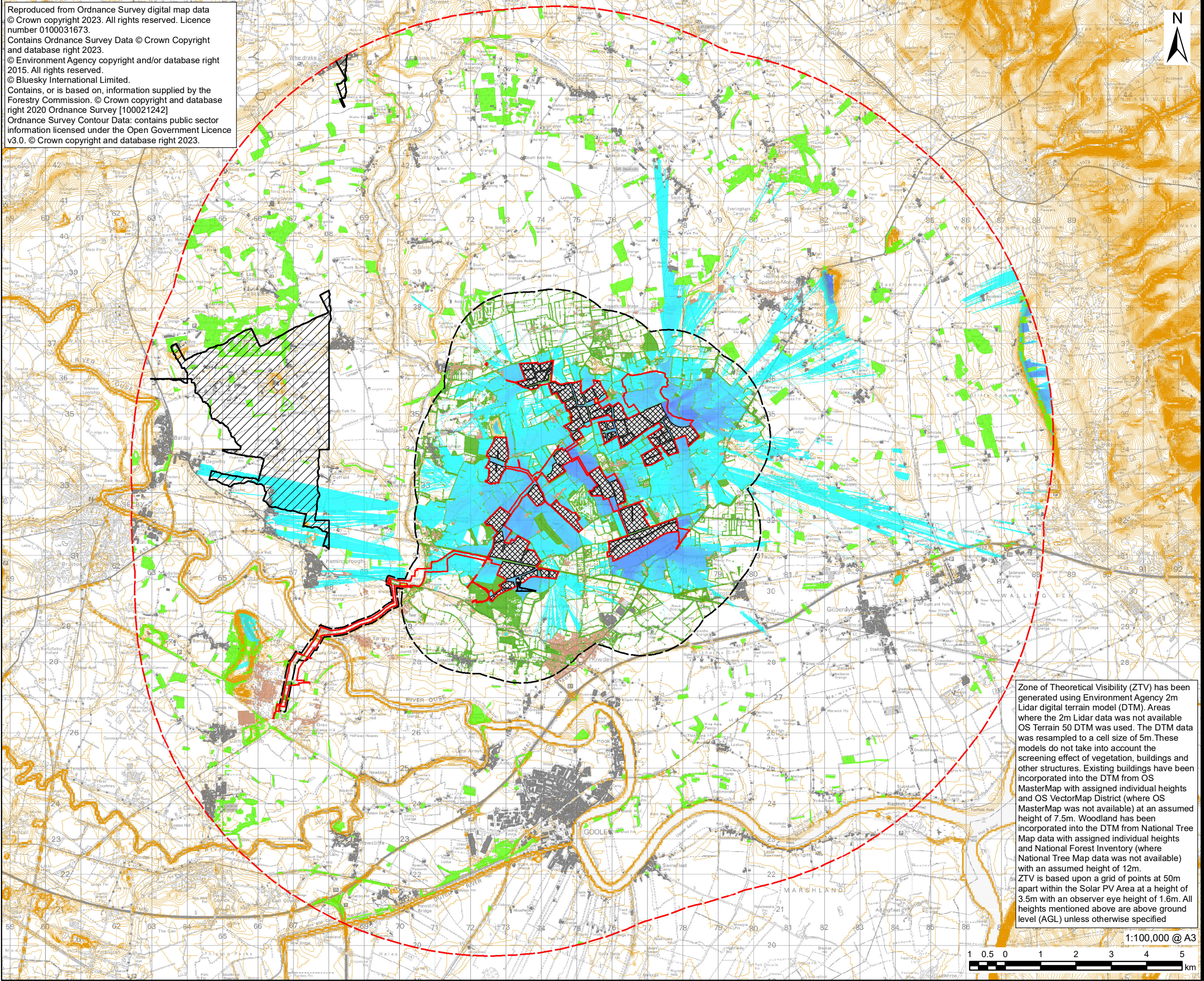


Reproduced from Ordnance Survey digital map data © Crown copyright 2023. All rights reserved. Licence number 0100031673.
 Contains Ordnance Survey Data © Crown Copyright and database right 2023.
 © Environment Agency copyright and/or database right 2015. All rights reserved.
 © Bluesky International Limited.
 Contains, or is based on, information supplied by the Forestry Commission. © Crown copyright and database right 2020 Ordnance Survey [100021242]
 Ordnance Survey Contour Data: contains public sector information licensed under the Open Government Licence v3.0. © Crown copyright and database right 2023.



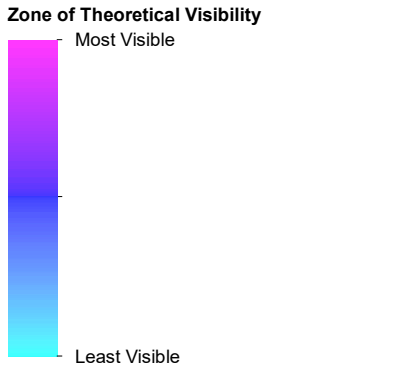
AECOM

PROJECT
East Yorkshire Solar Farm

CLIENT
East Yorkshire Solar Farm Limited

CONSULTANT
AECOM Limited
Midpoint,
Alencon Link
Basingstoke, RG21 7PP
www.aecom.com

- LEGEND**
- Order limits
 - Land not included in the Order limits
 - 10km Buffer from the Order limits
 - Solar PV Area - 3.5m Height
 - No 2m Lidar DTM Coverage
 - 1m Contour - Derived from OS Terrain50 DTM
 - Existing Building using Height from OS MasterMap
 - Existing Building - 7.5m Height
 - National Tree Map Data - Woodland Buffer
 - Woodland using Height from National Tree Map Data
 - Woodland - National Forest Inventory - 12m Height



Zone of Theoretical Visibility (ZTV) has been generated using Environment Agency 2m Lidar digital terrain model (DTM). Areas where the 2m Lidar data was not available OS Terrain 50 DTM was used. The DTM data was resampled to a cell size of 5m. These models do not take into account the screening effect of vegetation, buildings and other structures. Existing buildings have been incorporated into the DTM from OS MasterMap with assigned individual heights and OS VectorMap District (where OS MasterMap was not available) at an assumed height of 7.5m. Woodland has been incorporated into the DTM from National Tree Map data with assigned individual heights and National Forest Inventory (where National Tree Map data was not available) with an assumed height of 12m. ZTV is based upon a grid of points at 50m apart within the Solar PV Area at a height of 3.5m with an observer eye height of 1.6m. All heights mentioned above are above ground level (AGL) unless otherwise specified

ISSUE PURPOSE
Environmental Statement

PROJECT NUMBER
60683115

FIGURE TITLE
Zone of Theoretical Visibility with Surface Features - Solar PV Panels

FIGURE NUMBER
Figure 10-5



This drawing has been prepared for the use of AECOM's client. It may not be used, modified, reproduced or relied upon by third parties, except as agreed by AECOM or as required by law. AECOM accepts no responsibility, and denies any liability whatsoever, to any party that uses or relies on this drawing without AECOM's express written consent. Do not scale this document. All measurements must be obtained from the stated dimensions.